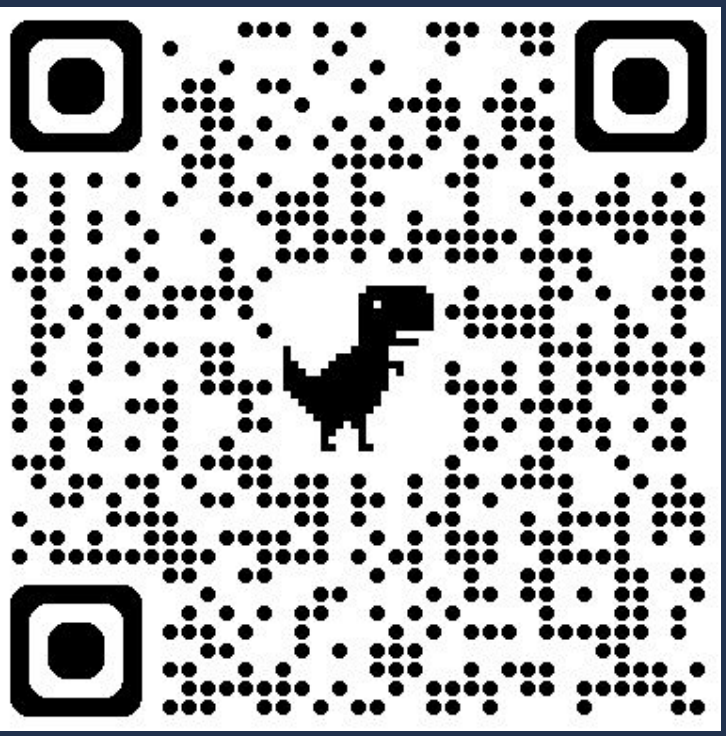




Advancing Online Spiritual Care: A Three-Phase Study with Chaplains on Co-Designing New Models of Delivery

Presenters: *C. Estelle Smith, PhD, Rev. George Handzo, APBCC, CSSBB*

Contributing Authors: *Dr. Alemitu Bezabih, Shadi Nourriz, Jesan Ahammed Ovi, Dr. Anne-Marie Snider, Dr. Daniel McKenzie*



JOHN TEMPLETON FOUNDATION
Inspiring Awe & Wonder
Grant #62930

Abstract & References

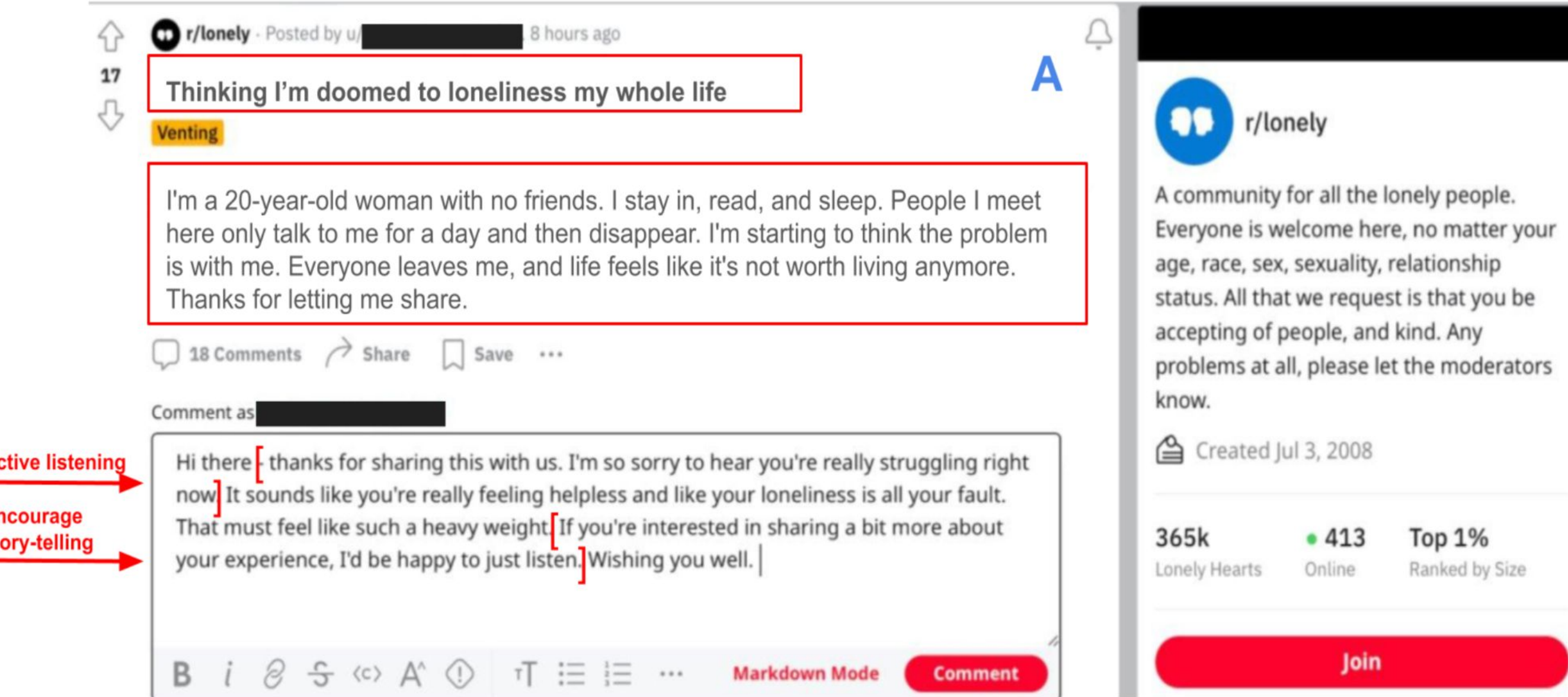
Overall Project Motivation

- During COVID-19, access to spiritual care was severely limited
- Beyond COVID, millions continue to seek support online for spiritual and existential concerns during serious illness
- Need to explore alternative models of spiritual care delivery
- This 3-phase project examined acceptability, feasibility, and design of Online Spiritual Care Communities (OSCCs).

Phase 1: Interviews & User Testing

Methods:

- Interviews with professional spiritual care providers (*n*=22)
- User testing sessions to elicit feedback on “state-of-the-art” online support communities on [Reddit.com](#)
- Ideation on what needs to change to enable meaningful spiritual care in future OSCCs
- Simulated user interaction: Writing Responses to live, unfiltered, real user posts

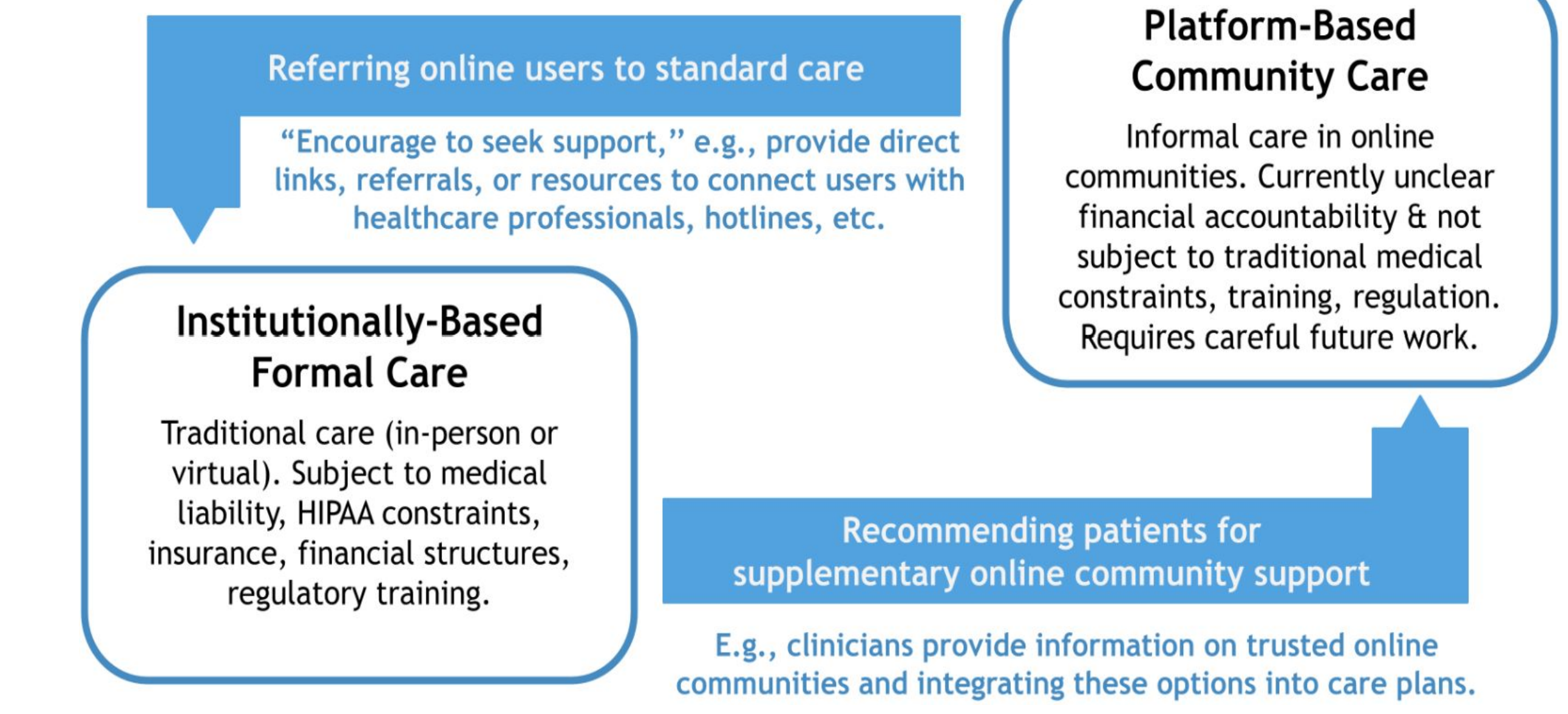


Results:

- Accessibility & scalability
- Increased agency for patient-initiated care
- Care Loop Model: OSSCs should be implemented as a supplemental form of care to extend clinical care pathways

Concerns:

- Trustworthiness
- Online risks, e.g., scams
- Distracting/busy UI/UX
- Need user trainings
- Need referrals to formal care



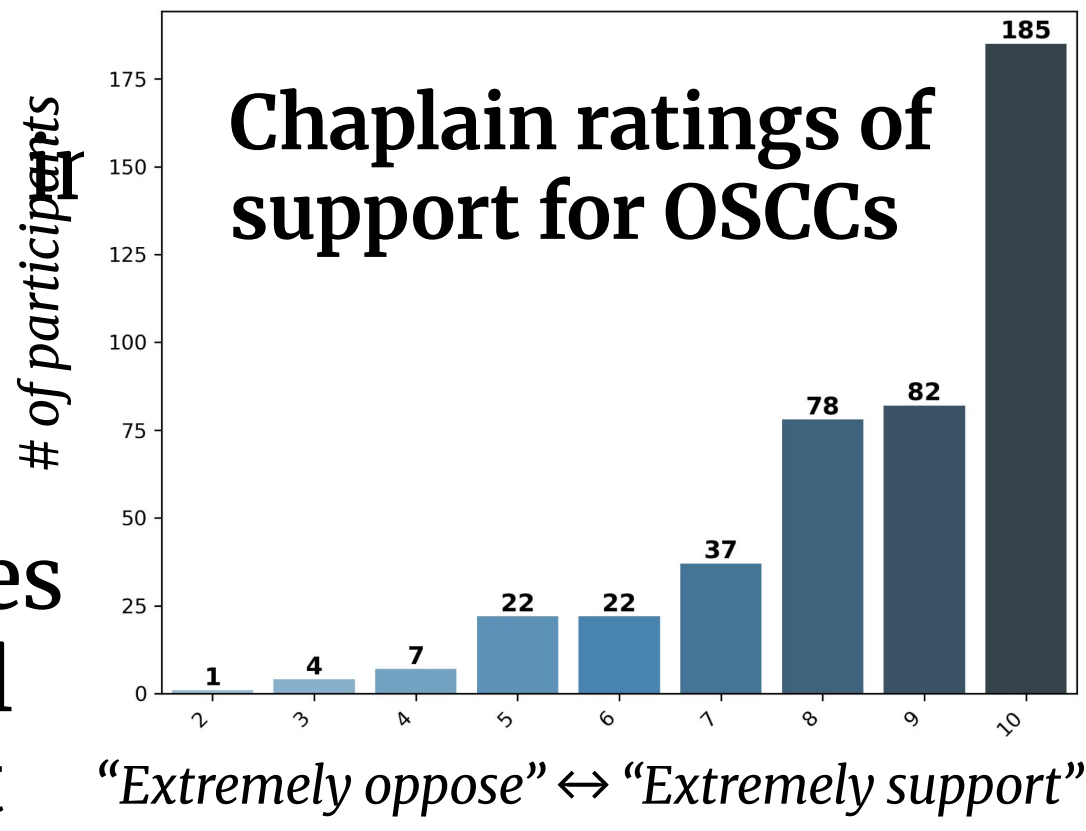
Phase 2: Large National Survey

Methods:

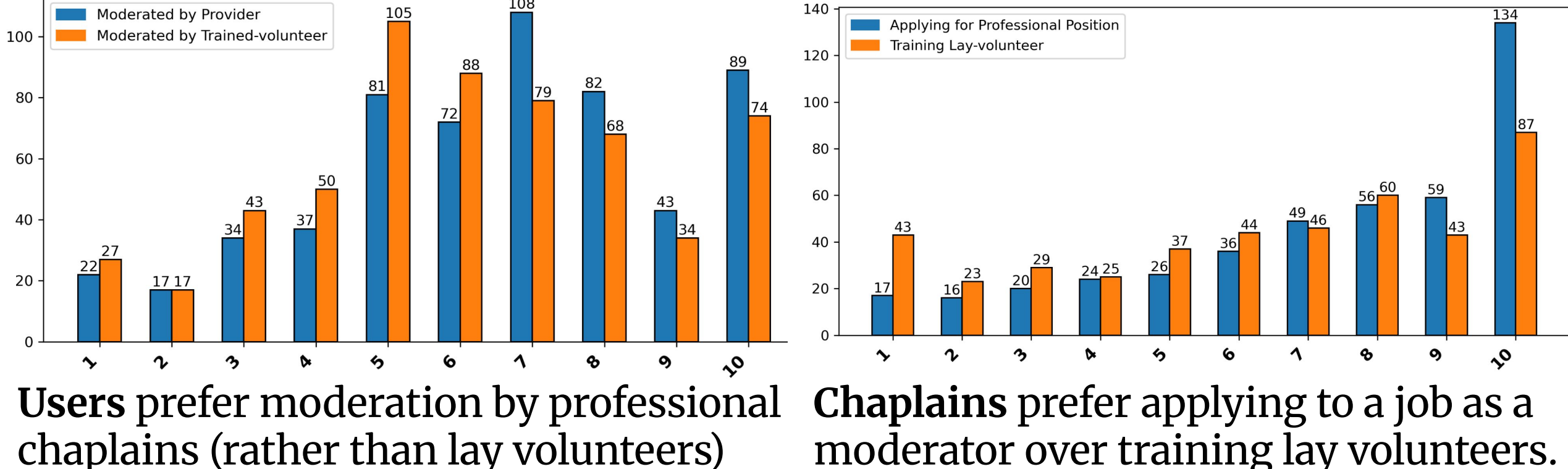
- National Survey of USA Stakeholders (*n*=1010):
 - Spiritual care providers (437), lay users (573)
- Distributed by spiritual care orgs (e.g., APC, SCA) and online communities (e.g., CaringBridge, Reddit, Facebook)

Results:

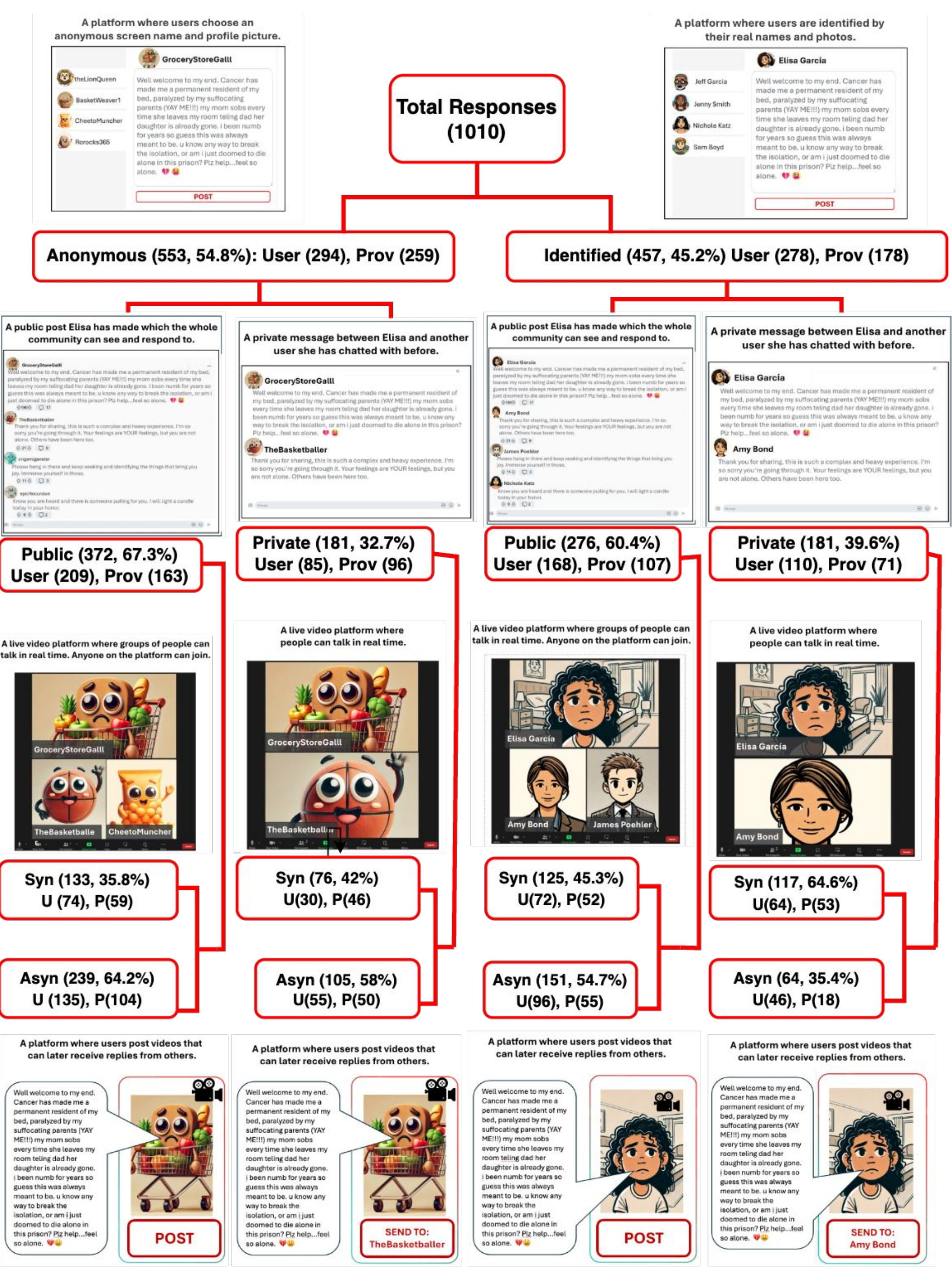
- Excessive support from chaplains to invest resources implementing OSCCs
- Significant preferences for building new communities rather than rely on existing ones
- OSCCs will require institutional affiliation for feasibility & trust



Preferred Moderation by Professional Chaplains:



“Build Your Own OSCC” Design Tournament:



Purpose:

Determine feasible and acceptable design configurations and affiliations.

Grounded in narrative comic of a fictional user persona, Elisa Garcia.

Most Popular Config:

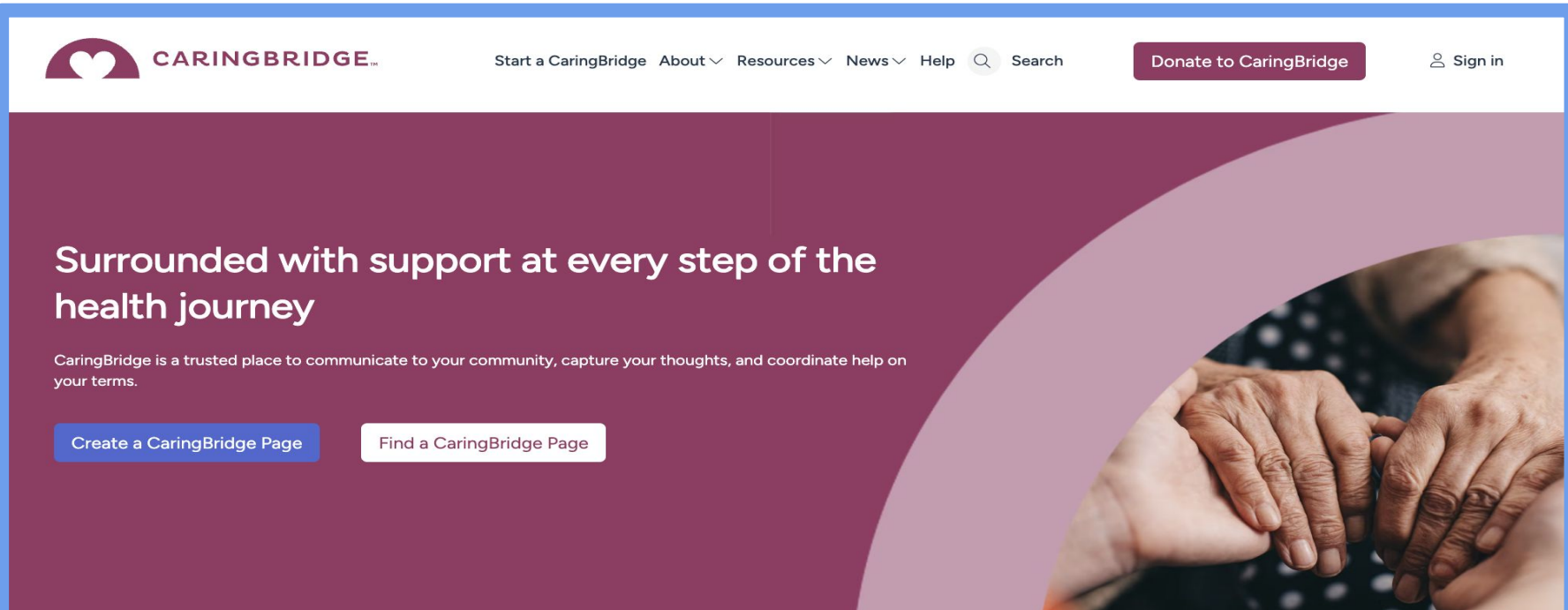
Anonymous, Public, and Asynchronous

(Similar to Reddit config)

Phase 3: Co-Design Workshops

Methods:

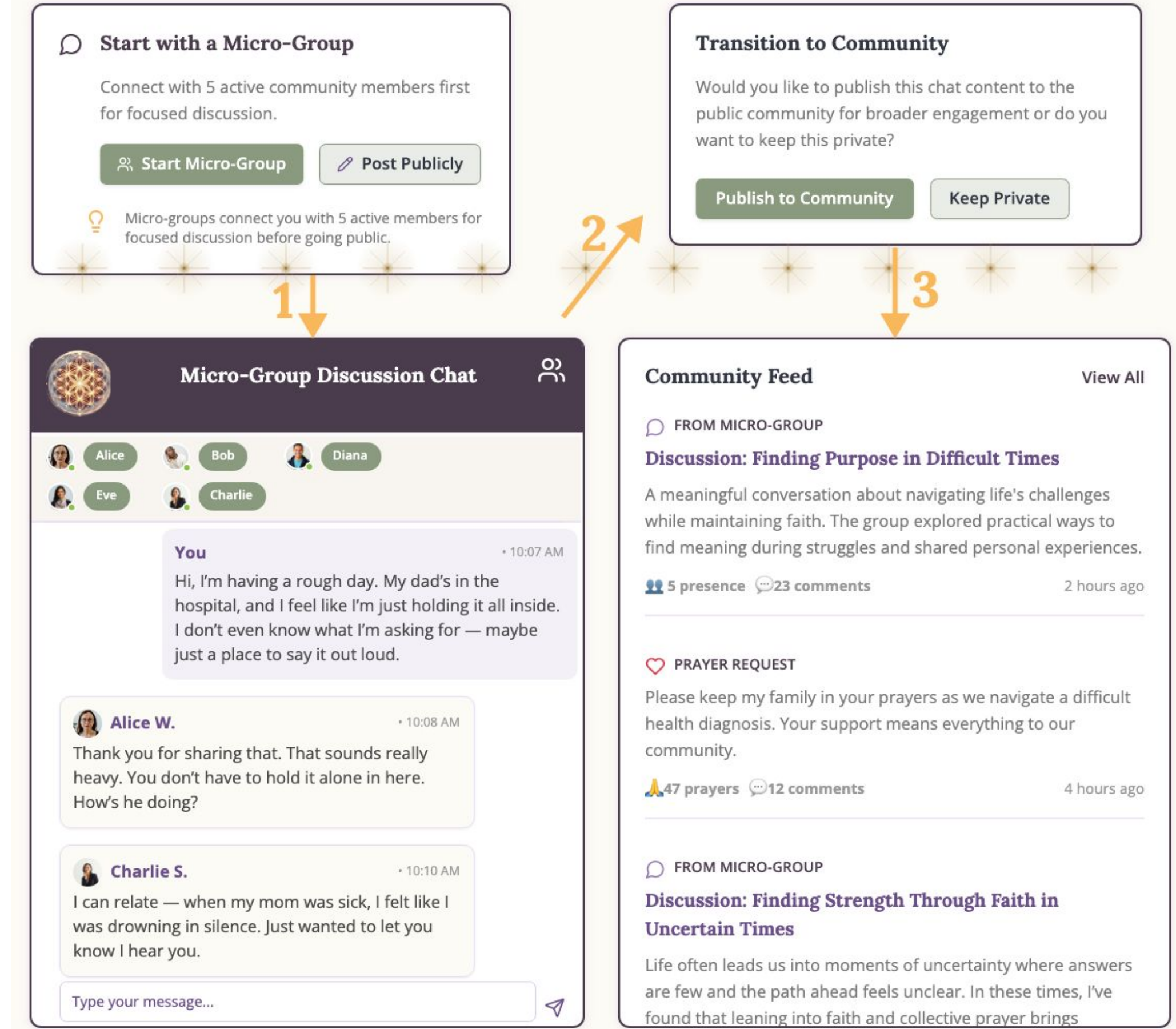
- Co-design workshops (*n*=24 chaplains)
- Purpose: Design novel interfaces that can effectively mediate spiritual care via community
- Interface Prototyping with CaringBridge.org



Hybrid OSCC Configuration:

Begin with “Micro-Group” (Synch, Private, Identified)

Transition to “Congregation” (Asynch, Public, Anonymous)



Digital Presence & Relational Togetherness:

“Light a candle” provides nonverbal solidarity and shared presence through ritualized transition from asynchronous feed into a synchronous space with others.

